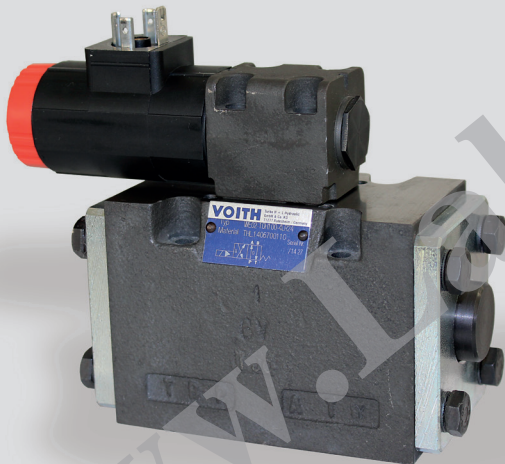


4/2, 4/3 Directional Control Valve, NG10 ISO 4401, piloted

Technical Data Sheet



Technical Data

General

Type of valve	piston valve
Operation	electric
Mounting	4x M6x75 DIN912
Connection of ports	mounting plate
Ambient temperature	-5 to +50 °C
Mounting position	any
Mass valve	4.0 kg

Hydraulic

Operation pressure P,A,B	max. 315 bar
Operation pressure T	max. 150 / 315* bar
Control pressure range	3 to 315 bar
Control oil volume	2 x 1,5 cm ³ at 4/3 valves 3 cm ³ at 4/2 valves
Hydraulic oil temperature	-10 to +70 °C
Viscosity range	10 to 300 mm ² /s
max. flow	160 l/min

Electric

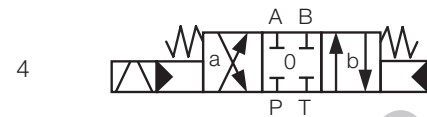
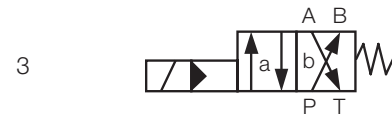
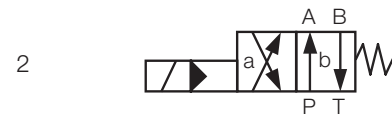
Voltage (±10%)	24 V DC	230 V, 50 Hz AC
Switching time on **	17 ms	
Switching time off ***	17 ms	
Power consumption P20	23 W	
Start up peak P20	50 VA	
Duty factor	100%	100%
Protection system	IP65 at inserted valve plug DIN 40050	

* at external pilot oil drain

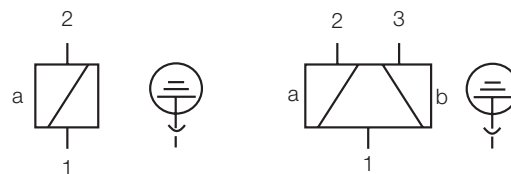
** at 24V DC ± 5%

*** at terminal voltage = -50V at free circuit

Symbol

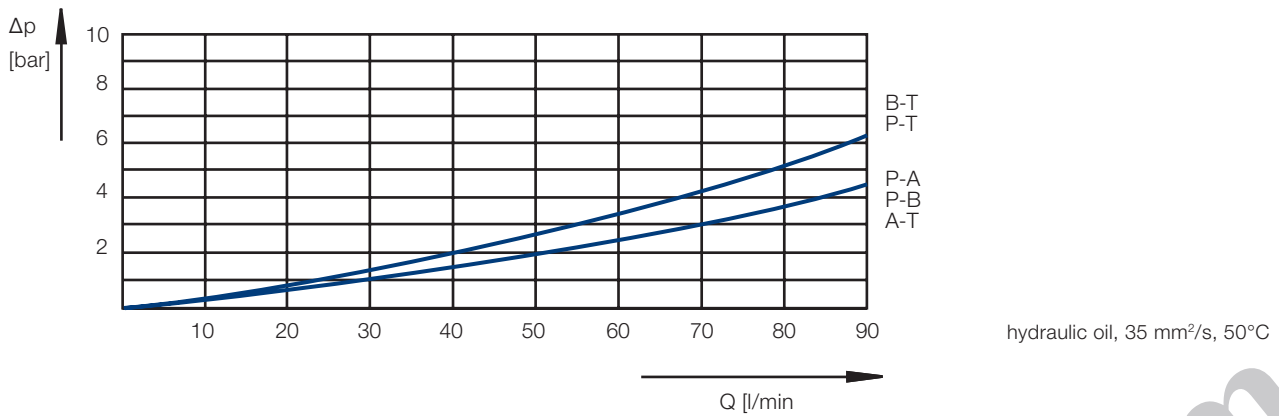


Terminal Assignment



connector-type: DIN 43650, design A

Characteristic Curve



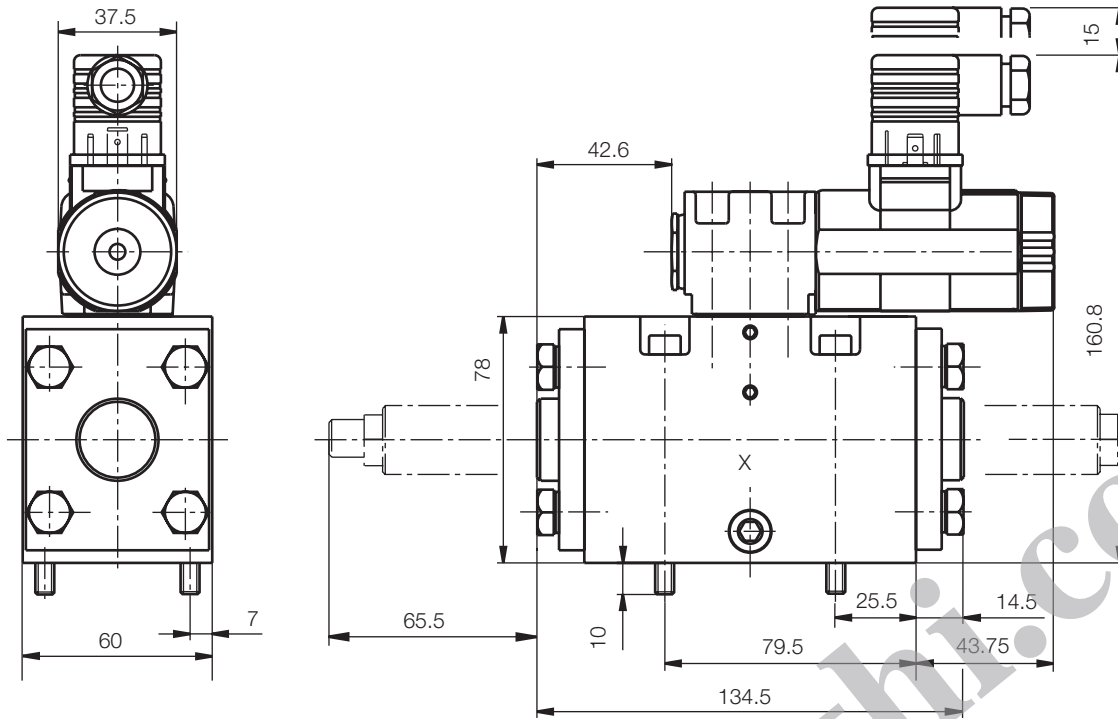
Features

- piloted piston valve
- high switching power, short switching time
- energy saving through minimised flow resistance
- with internal or external pilot oil supply
- easy service: solenoid can be changed without leakage while the valve is under system pressure
- solenoid coil can be turned through 3 x 90°, allow alternative connector position
- only one connector, even with 4/3 way valves

Options

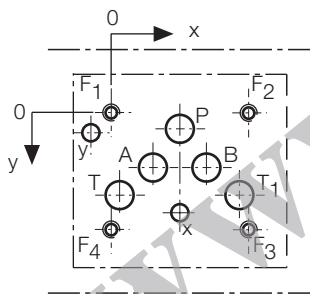
- adjustable switching delay
- stroke limitation (replace one-way restrictor)
- electric monitoring of the spool position
- alternative symbols - data sheet: 14607-DSH
- alternative voltages

Dimensional Drawing



dimensions in mm
 plug is not included
 mounting screws are not included, 4 pcs. M6x75 DIN 912, M=14 Nm

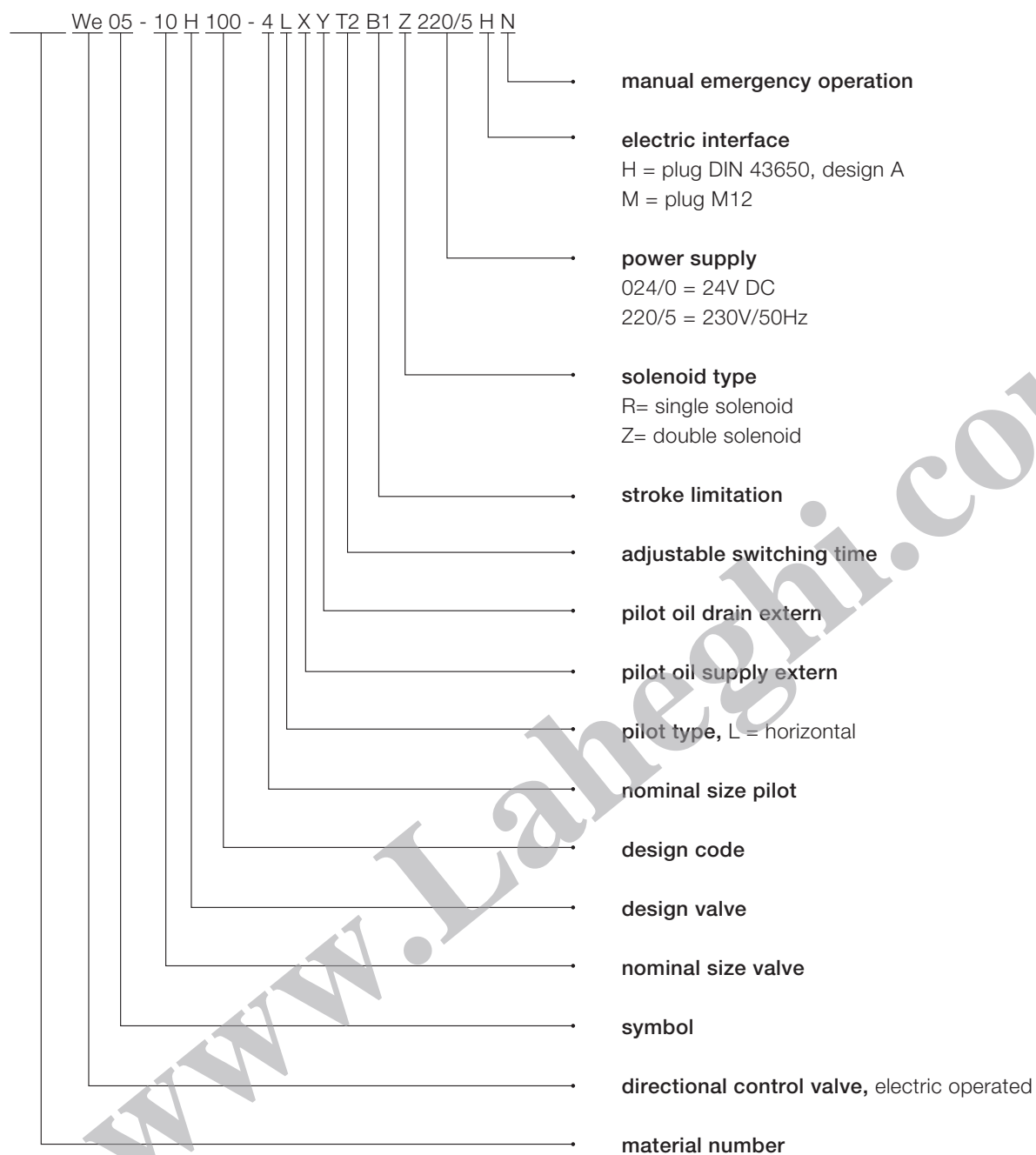
Port Connection Pattern NG 10 ISO 4401



view: fastening side of mounting plate
 F: M6, Gewindetiefe min. 1,5 x Ø.
 only at external supply x and y
 various single or multiple mounting plates are available

	P	A	T	B	T1	F1	F2	F3	F4	x	y
Ø max [mm]	11.5	11.5	11.5	11.5	11.5	-	-	-	-	7	7
x [mm]	27	16.5	3.2	37.5	50.8	0	54	54	0	27	-8
y [mm]	6.4	21.5	32.5	21.5	32.5	0	0	46	46	39.6	8

Type Code



www.Laheghi.com

This is a translated document. Original language: german.
Legally binding language version of document: german.

Voith Turbo H+L Hydraulic GmbH & Co. KG
Schuckertstraße 15
71277 Rutesheim, Germany
Tel. +49 7152 992 3
Fax +49 7152 992 400
sales-rut@voith.com
www.voith.com/hydraulic-systems

